



HAL
open science

Projecting 2100 urban growth to assess urban climate changes on Toulouse urban area (France): combining scenarios and land change / climate models

T. Houet, Valéry Masson, Marie-Pierre Moine, Colette Marchadier, Marion Bonhomme, Geneviève Bretagne

► To cite this version:

T. Houet, Valéry Masson, Marie-Pierre Moine, Colette Marchadier, Marion Bonhomme, et al.. Projecting 2100 urban growth to assess urban climate changes on Toulouse urban area (France): combining scenarios and land change / climate models. GLP-OSM (Global Land Project Open Science Meeting), Mar 2014, Berlin, Germany. 159, pp.2180 - 2192, 2011. hal-02158489

HAL Id: hal-02158489

<https://insa-toulouse.hal.science/hal-02158489v1>

Submitted on 20 Jun 2019

HAL is a multi-disciplinary open access archive for the deposit and dissemination of scientific research documents, whether they are published or not. The documents may come from teaching and research institutions in France or abroad, or from public or private research centers.

L'archive ouverte pluridisciplinaire **HAL**, est destinée au dépôt et à la diffusion de documents scientifiques de niveau recherche, publiés ou non, émanant des établissements d'enseignement et de recherche français ou étrangers, des laboratoires publics ou privés.

PROJECTING 2100 URBAN GROWTH TO ASSESS URBAN CLIMATE CHANGES ON TOULOUSE URBAN AREA (FRANCE)

COMBINING SCENARIOS AND LAND CHANGE / CLIMATE MODELS



T. Houet¹, V. Masson², M.-P. Moine², C. Marchadier², M. Bonhomme³, G. Bretagne⁴

¹ GEODE – Geography of Environment, UMR 5602 CNRS/UTM, Université de Toulouse, 5 al. Machado, 31058 Toulouse, France

² Météo-France, CNRM-GAME, 42, Av. G. Coriolis, 31057 Toulouse Cedex 1, France

³ LRA, ENSA Toulouse, 83, rue Aristide Maillol, BP 10629, 31106 TOULOUSE CEDEX 1

⁴ Toulouse Urban Planning Agency, Le Belvédère - 11 boulevard des Récollets, CS 97802 - 31078 TOULOUSE Cedex 4



CONTEXT AND OBJECTIVES

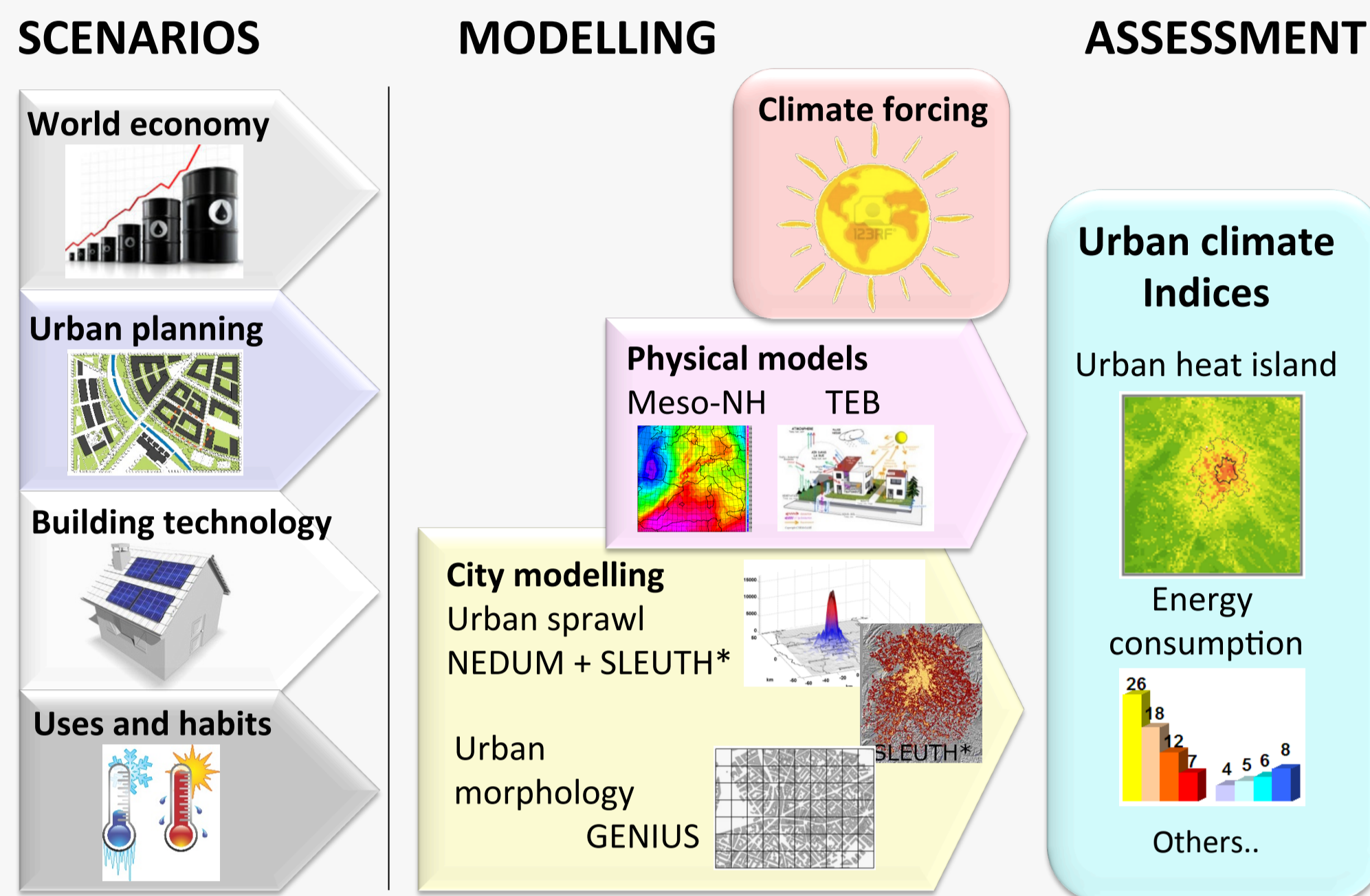
Context

- Build a multidisciplinary and integrated modeling platform to simulate urban processes over the XXIe century : the ACCLIMAT Platform.
- Propose city projections under various urban scenarios and assess their impacts depending on the climate change.
- Produce relevant indicators to evaluate these city projections and support sustainable urban planning

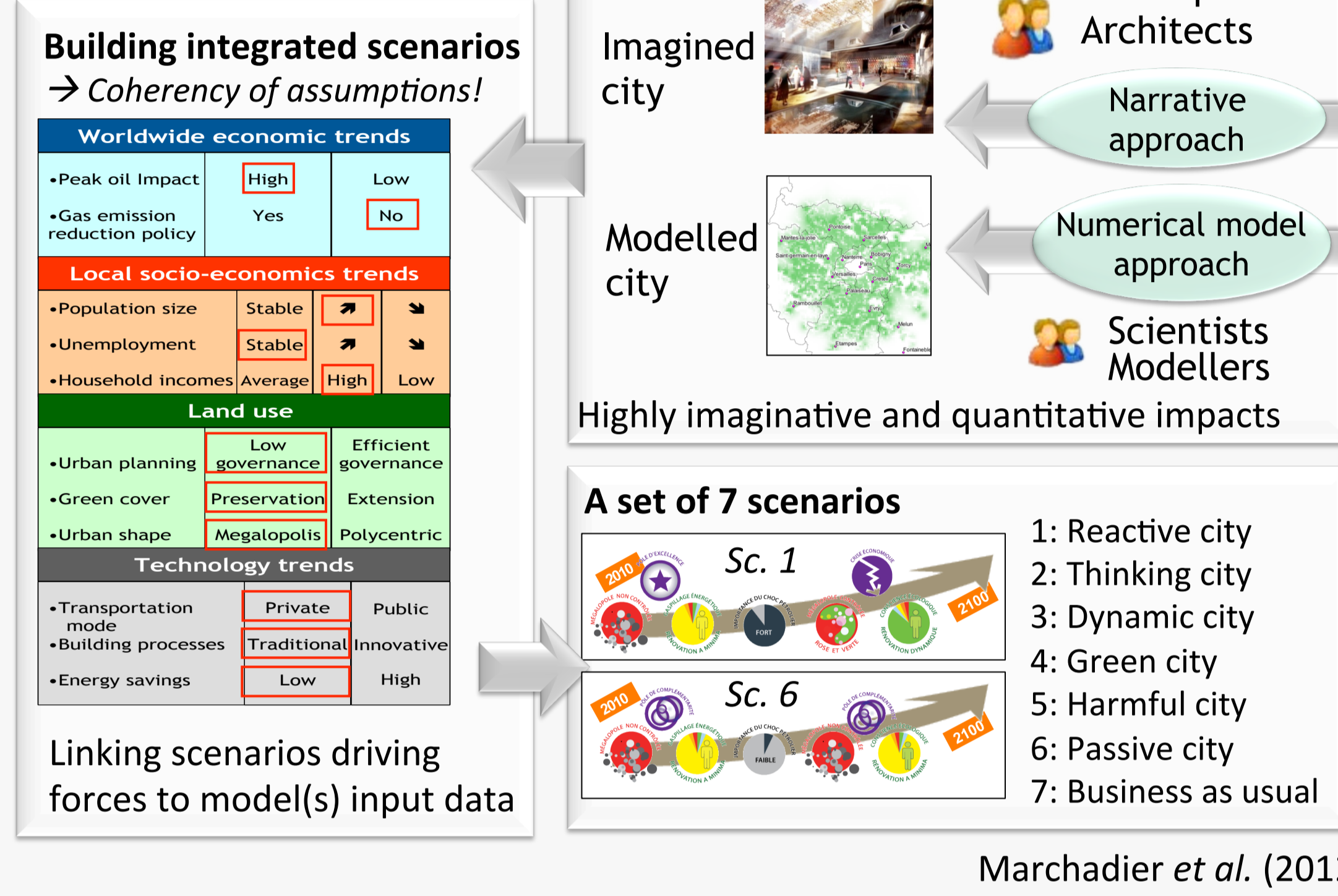
Challenges

- **Multidisciplinary** : ACCLIMAT project involves various research field areas: economy, geography, architecture, building materials, meteorology, climate, urban planning.
- **Integrated** : The Platform connects models and. This requires to overcome some gaps: scientific concepts, modeling approaches, computing languages, heterogeneous scales...
- **Scenario-projections**: Consistent scenarios are built based on worldwide economic trends, regional socio-economic context, urban planning, building regulations and technology trends. These scenarios are simulated under different climate change context.

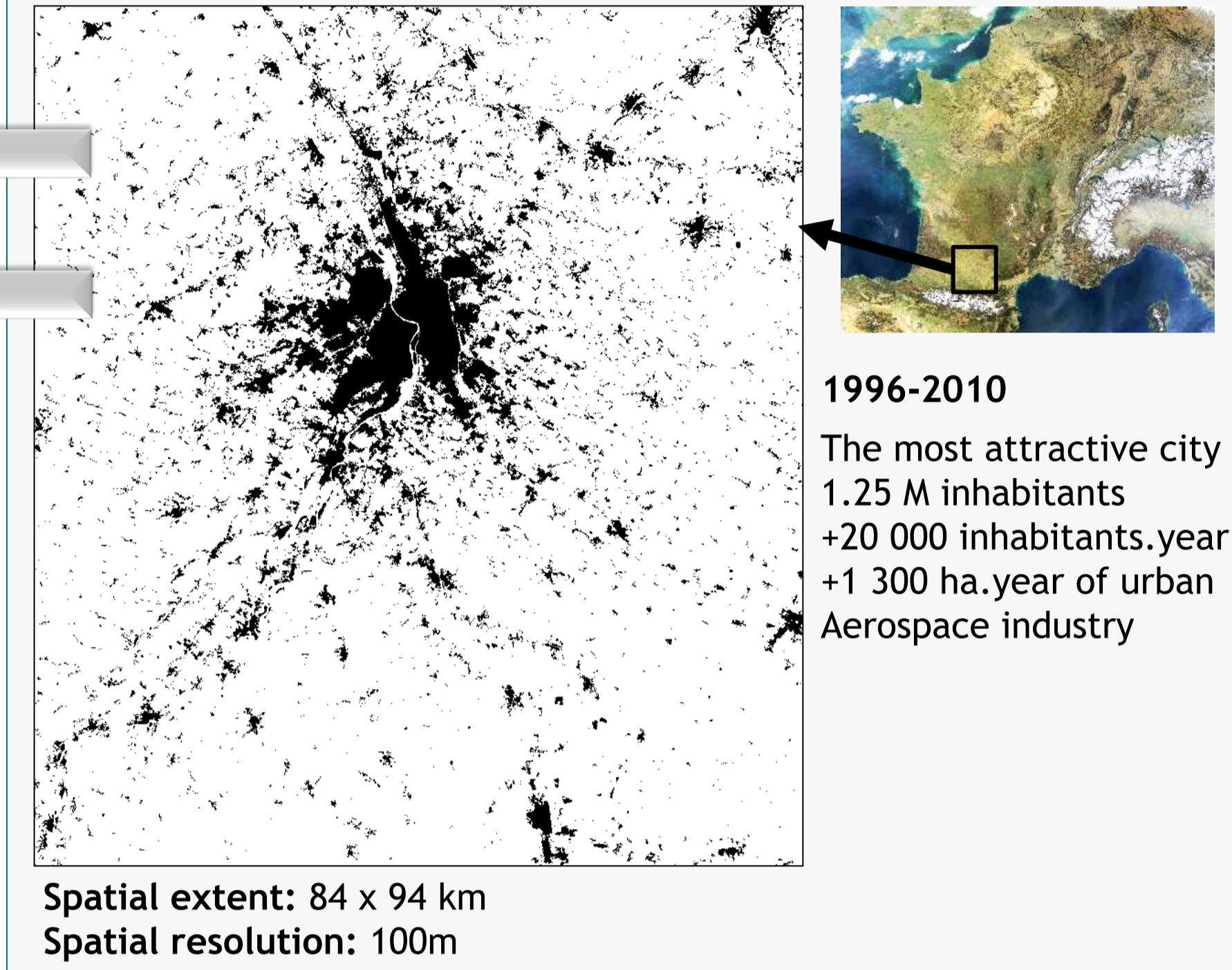
PROJECT METHODOLOGY



SCENARIOS

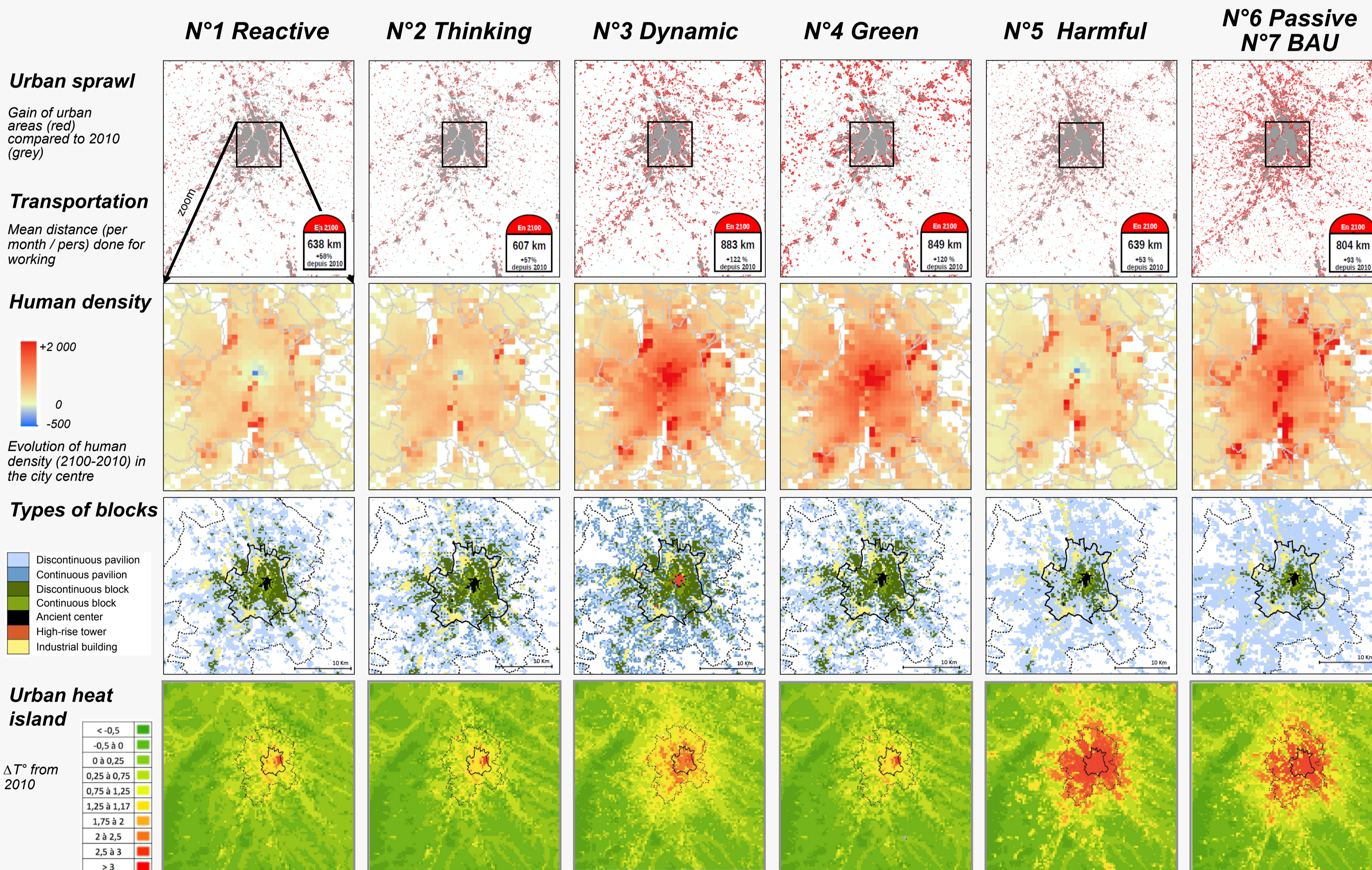


STUDY SITE: Toulouse urban area



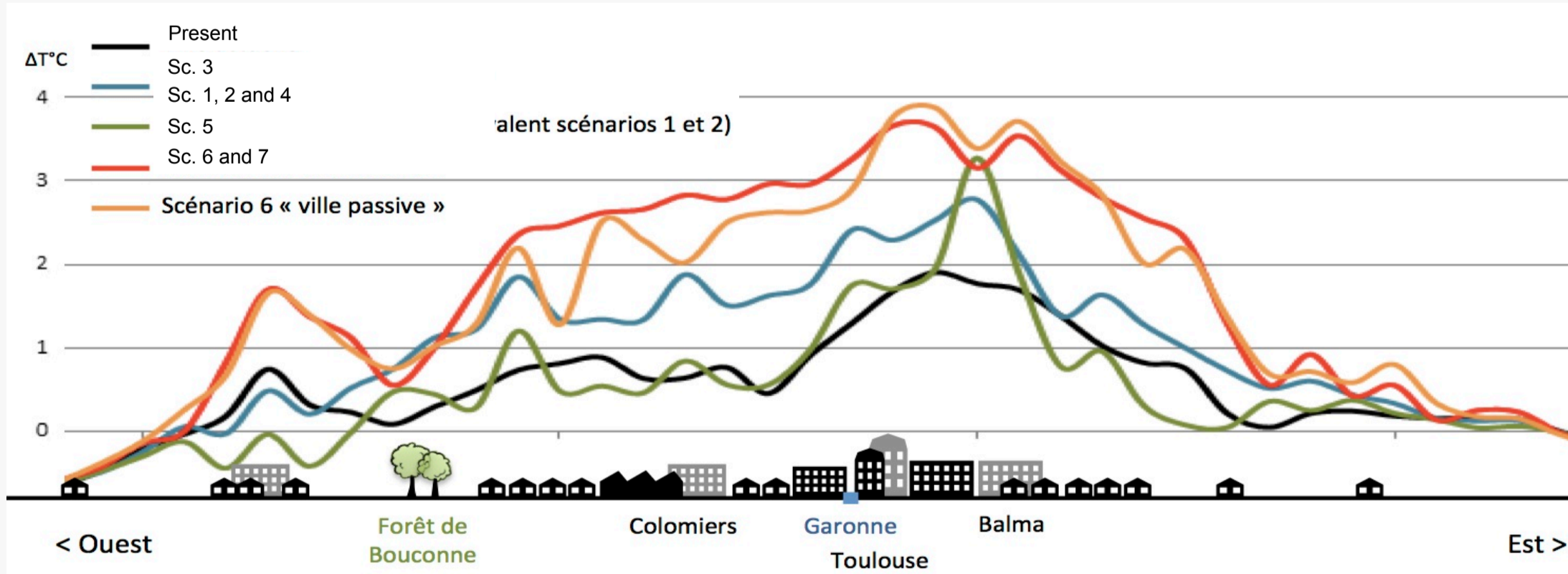
RESULTS

Comparison of the simulated scenarios

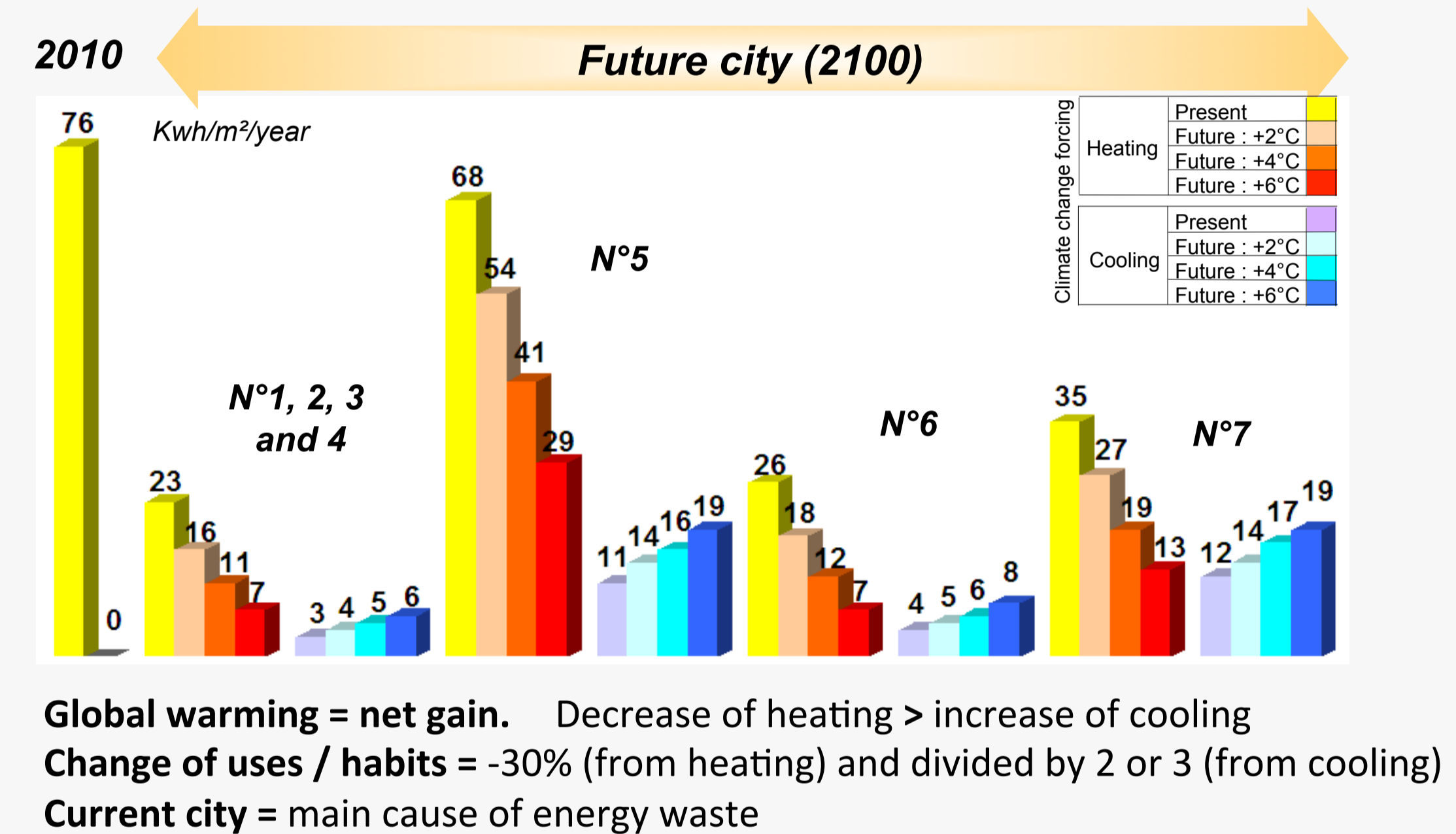


Impacts on urban climate

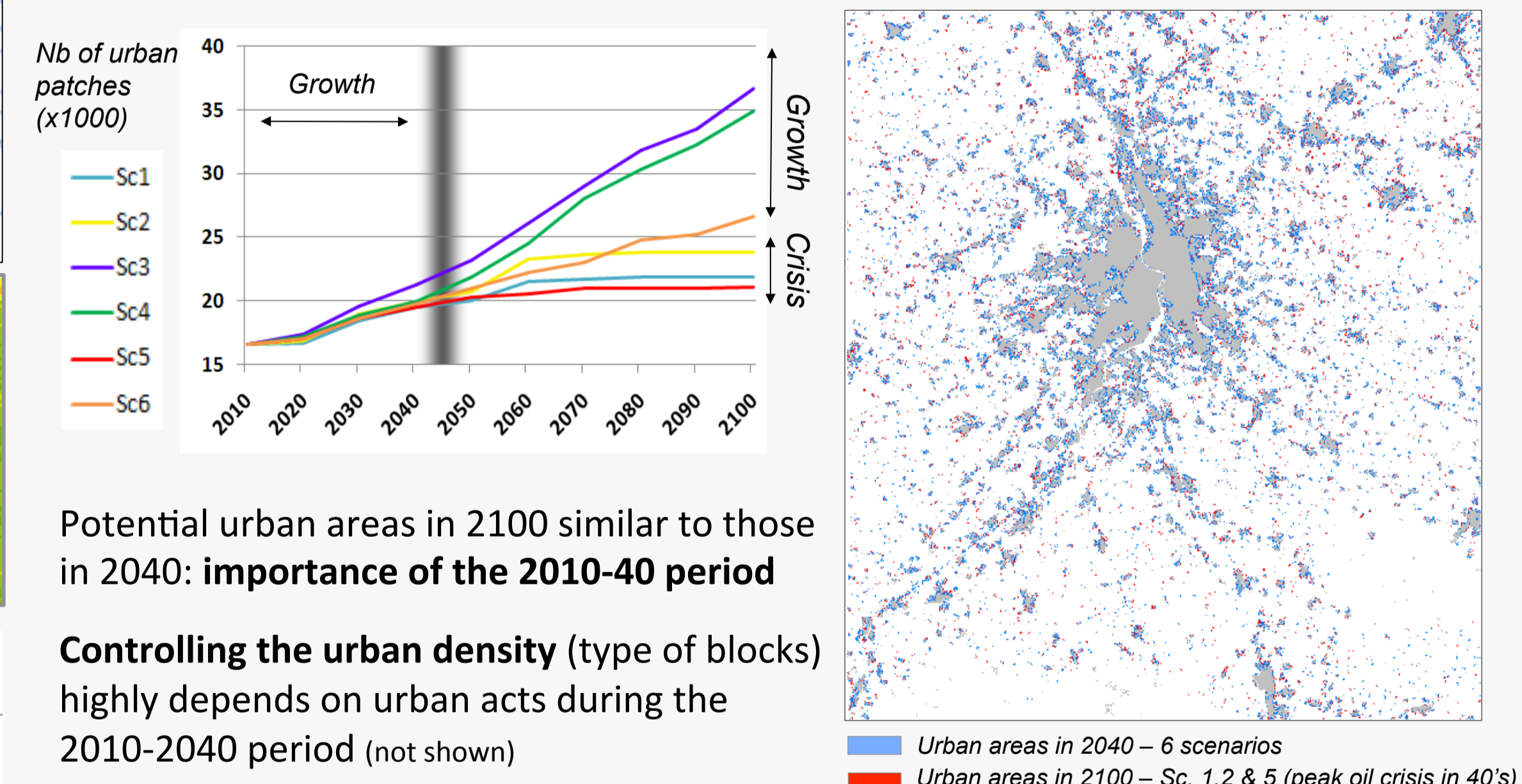
Urban sprawl = UHI from +1 to +3°C
Global warming = +2 to 6°C
Future urban climate on Toulouse = from +3°C to +9°C



Impacts on energy consumption



Do we need to act soon?



REFERENCES

- Houet T. and Pigeon G. (2011), Mapping Urban Climate Zones And Quantifying Climate Behaviors - An Application On Toulouse Urban Area (France), Environmental Pollution, Vol 159, Iss 8-9, 2180-2192
- Masson V., Marchadier C., Adolphe L., Aguejard R., Avner P., Bonhomme M., Bretagne G., Briotter X., Bueno B., de Munck C., Doukari O., Hallegatte S., Hidalgo J., Houet T., Lemonsu A., Moine M.P., Morel T., Pigeon G., Salagnac J.L., Zibouche K., (Submitted). Adapting Cities to Climate change: a systemic modelling approach, *Urban Climate*.
- Moine *et al.* (2012) A multidisciplinary modeling platform to draw possible futures of urban climate, ICUC8 - 8th International Conference on Urban Climate – Dublin, Ireland.
- Marchadier C., Houet T., Bretagne G. (2012) How to define and assess city adaptation strategies? ICUC8 - 8th International Conference on Urban Climate – Dublin, Ireland.

WEBSITE

<http://www.cnrm.meteo.fr/acclimat/?lang=en>

CONCLUSION

A very ambitious project (multidisciplinary and integrated) :

- Combining forecasting and backcasting images of the future to wider the diversity of the scenario
- Developing a platform to couple all urban and physical models and assess quantitative impacts on urban climate
- Coupling economical, geographical and architectural models for simulating long-term futures urban growth.

Key-triggers and futures stakes

- Urban management and policies to mitigate urban climate – urban tools exist but depends on political will
- Future pressure on water supply and electricity have been highlighted
- It is essential to act soon, to change inhabitants energy habits and improve energetic performance of existing buildings.



Project founded by RTRA STAE

